

EBSP
LA SAUVENIÈRE

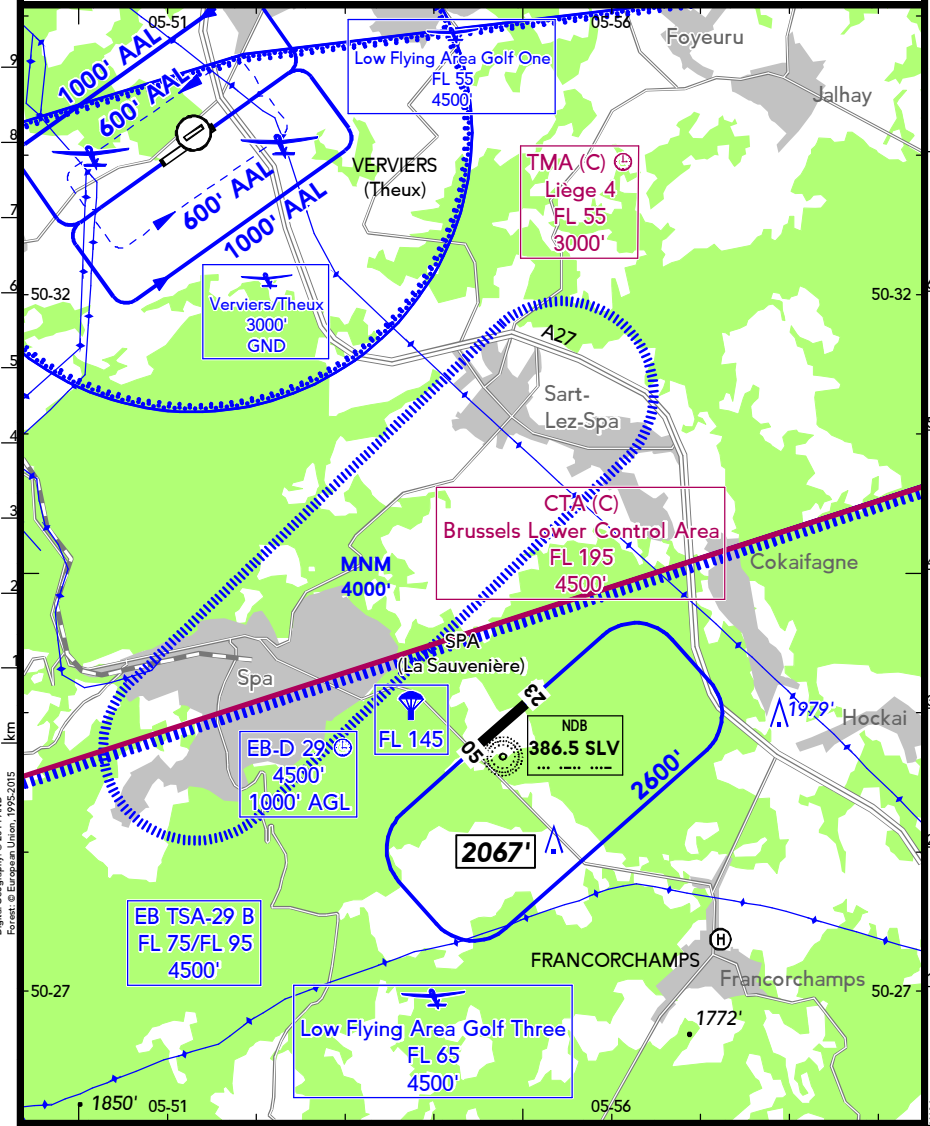
20 SEP 19 **(19-1)**

SPA
BELGIUM

BRIEFING STRIP™

LOCATION Elev 1542' /470m N50 29.0 E005 54.6	FIS BELGA INFORMATION 129.325⁽¹⁾ BRUSSELS INFORMATION 126.900⁽²⁾
AIRSPACE BRUSSELS CONTROL 128.805⁽³⁾ (4) 131.100⁽³⁾ (5) 129.575⁽³⁾ (6) 125.000⁽³⁾ (7) 128.200⁽³⁾ (8) BELGA RADAR 129.325⁽³⁾ LIEGE APPROACH 119.280⁽⁹⁾	SPA RADIO 124.640 (fr, en)

(1) MIL (2) CIV (3) Brussels Lower CTA (4) North (5) West (6) East (7) Luxembourg (8) Huldenberg
 (9) Liège TMA



Digital Geography: © 2014 AND Forest, © European Union, 1992/2015

EBSP

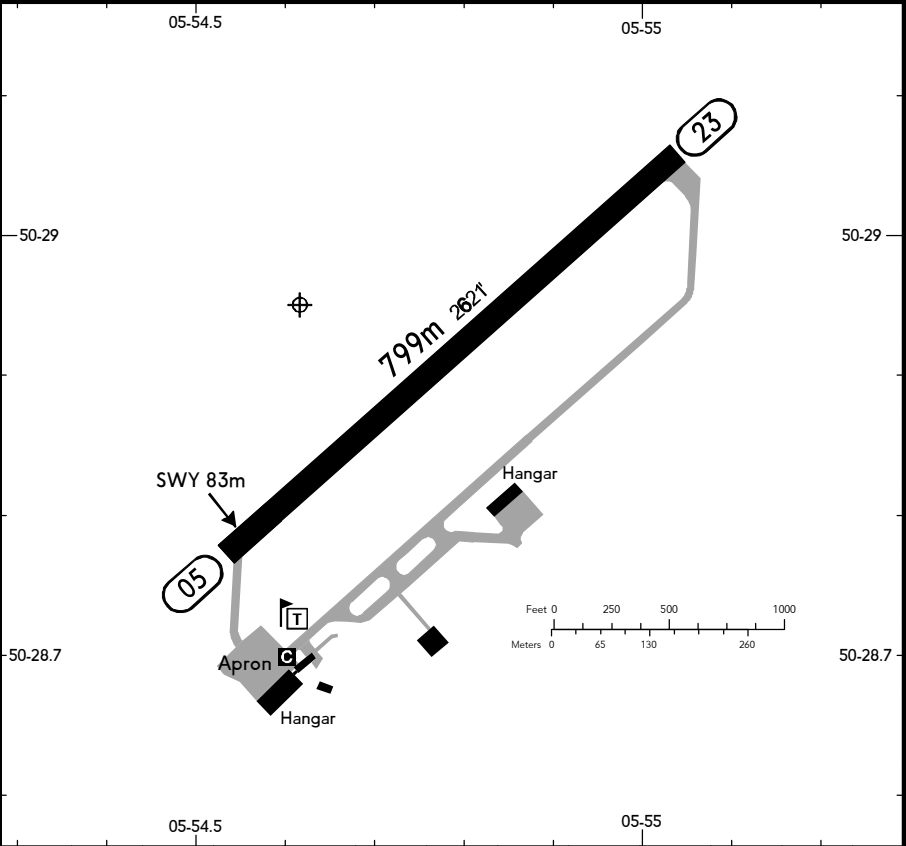
LA SAUVENIÈRE

20 SEP 19 **19-2**

SPA
BELGIUM

BRIEFING STRIP™

LOCATION Elev 1542' /470m N50 29.0 E005 54.6	SPA RADIO 124.640 (fr, en)	ADMITTED AIRCRAFT
---	-----------------------------------	-----------------------



RWY No	Dimension (m) - Surface	TORA (m)	LDA (m)	Strength	Lights
05 (048°) 23 (228°) 1	799 x 30 Asphalt	799 716	716	5.7t MTOW	---

1 Longitudinal slope < 2%.

NORDO ACFT prohibited except prior permission from aerodrome authority.

It is prohibited to overfly the hamlet of Nivezé and its surroundings below 4000'.

Climbing to higher levels must be effected above the wooded area of the "Fagnes" SSE of AD.

Jet aircraft operations not allowed.

Chocks mandatory on parking area.

Due to the presence of significant obstacles, solo training flights require two familiarization flights with instructor.

The solo training flight has to be carried out within 6 weeks after the last familiarization flight with instructor.